



## A fantastic opportunity to own your very own Moulin.

Here is a fully renovated mill set in just under an acre of land next to the river Vienne. The mill has 4 large double bedrooms all with fantastic views over the river.

**Town:** Confolens  
**Dept:** Charente  
**Plot size (m2):** 3693  
**Habitable (m2):** 190  
**Bedrooms:** 4  
**Bathrooms:** 1  
**Agent:** Hugh Mcsheffrey

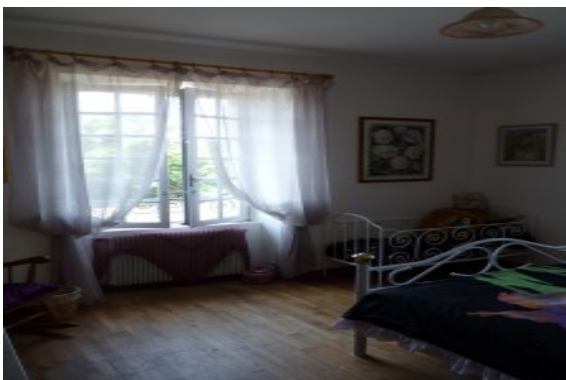
*hms@leggett.fr*

**16449HM16.pdf**

**€ 399 000**

You enter into a large welcoming hall giving access to 4 double bedrooms all with fantastic views across the river, a study with French doors to the garden, fitted bathroom and WC with storage. Downstairs, there is a large lounge, again with fantastic views across the river and double doors to a covered terrace/outside dining room. There is a large understairs cupboard and a door leading to a fully fitted kitchen with door leading to a larder/storage room, and a built in cupboard. The kitchen has dual aspect windows and a glazed door leading to the garden.

Outside, there are lovely private areas within the beautifully planted, mature garden with access to the river. The garden is a true delight with mature shrubs, fruit trees and pathways cut through, which take in different views of the river. From the terrace there are stone steps leading to a pool area with a 50m2 pool, which again offers stunning views of the river and surrounding gardens.



## Mansle

**place 8 mai 1945, 16230 Mansle**

**TEL: 08700 11 51 51 email: info@frenchestateagents.com**