



Detached bungalow with basement on edge of town with garden and pool

This large spacious house with basement is situated on the edge of Mansle only 25 minutes from Angouleme with its airport and main line station. The mature garden is enclosed and there is an in-ground swimming pool. All amenities including schools are within walking distance.

Town: MANSLE
Dept: Charente
Plot size (m2): 1000
Habitable (m2): 150
Bedrooms: 4
Bathrooms: 2
Agent: Laura Bond

lbond@leggett.fr

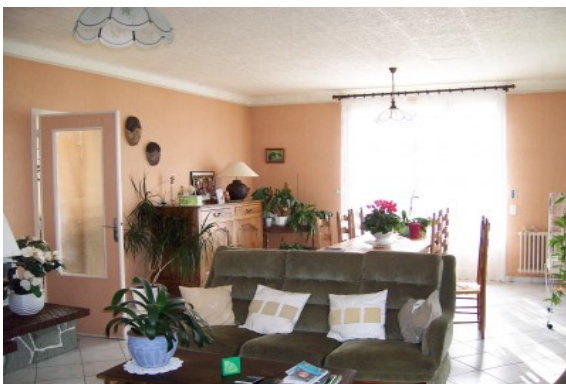
10764SE16.pdf

€ 186 840

The exterior steps and balcony lead into the entrance hall. To the left is a 40m² Living Room with windows all around making a light airy room. There is a door from the Hall and Living room into the Kitchen 16m². The kitchen is old fashioned but spacious and overlooks the back garden. Door and interior steps to basement. From the entrance hall, is a corridor leading to 3 double bedrooms, bathroom and wc.

The basement consists of several storerooms a large integrated garage and also houses an independent bedroom with ensuite bathroom and wc.

The property is within walking distance to the town of Mansle with its traditional market place and all shops.



Mansle

place 8 mai 1945, 16230 Mansle

TEL: 08700 11 51 51 email: info@frenchestateagents.com